

**Supplementary Online Material for**

**A new species of lowland tailorbird (Passeriformes: Cisticolidae: *Orthotomus*)  
from the Mekong floodplain of Cambodia**

Simon P. Mahood\*, Ashish Joshia Ingti John, Jonathan C. Eames, Carl H. Oliveros,  
Robert G. Moyle, Hong Chamnan, Colin Poole, Howie Nielsen and Frederick H.  
Sheldon

\*Corresponding author. [smahood@wcs.org](mailto:smahood@wcs.org)

Published in *Forktail*

**This PDF file includes:**

Tables S1 to S5

Figure S1

**Additional Supplementary Files available online:**

Media Files S1-S6

**Table S1. Study locations within the floodplain of the Mekong, Tonle Sap and Bassac rivers, arranged north-south.**

Location	Coordinates	<i>O. chaktomuk</i>	Other <i>Orthotomus</i> spp.	Verification	Observers
Near Chong Khneas, Siem Reap Province	13°18'22.86"N 103°48'17.26"E	None	<i>O. atrogularis</i> (many) and <i>O. sutorius</i> (many)	Photograph	SPM, AJ, HN <i>et al.</i>
Prek Toal, Battambang Province	13°6'13.56"N 103°41'50.00"E	None	<i>O. atrogularis</i> (many)	Photograph	SPM, AJ, JCE, HN, HC, CP <i>et al.</i>
Chikraeng Bengal Florican Conservation Area, Siem Reap Province	13°1'19.30"N 104°22'41.46"E	None	<i>O. atrogularis</i> (2M, 1F)	Photograph	SPM, HC
Near Damdek town, Siem Reap Province	13°16'9.45"N 104° 5'6.69"E	None	<i>O. atrogularis</i> (1M)	None	AJ, CP
c.10 km east of Kampong Thom town, Kampong Thom Province	12°39'15.60"N 104°57'27.56"E	None	None	None	SPM, AJ
Near Kratie town, Kratie Province	12°36'27.52"N 106° 01'36.06"E	None	<i>O. atrogularis</i> (1M, 1F)	Photograph	J. Eaton
Baray Bengal Florican Conservation Area, Kampong Thom Province	12°23'34.56"N 104°54'24.34"E	3M, 2F	<i>O. atrogularis</i> (1M)	Photograph	SPM
c.15 km south-west of Skuon town, Kampong Cham Province	11°56'53.94"N 104°56'50.94"E	>13M, >10F	<i>O. atrogularis</i> (2M, 1F), <i>O. sutorius</i> (2M)	Photograph, sound recording, specimen	SPM, AJ, JCE, HN, HC <i>et al.</i>
c.6 km east of Kampong Cham	11°57'55.92"N 105°32'26.49"E	4M, 2F	<i>O. atrogularis</i> (1M)	Photograph, sound	SPM, AJ, CP

town, Kampong Cham Province				recording	
Along Highway 61 near Prekydam, Kandal and Kampong Cham Provinces	11°50'59.97"N 104°50'23.27"E	>15M, >12F	<i>O. sutorius</i> (3M)	Photograph	SPM, AJ, HN, HC, JCE <i>et al.</i>
Kraing Check, Kandal Province	11°41'53.36"N 104°46'38.93"E	1M, 1F	None	Photograph	HN
Prek Ksach, Kandal Province	11°41'20.97"N 104°53'23.11"E	>9M, >3F	<i>O. atrogularis</i> (1M)	Photograph, sound recording	SPM, AJ, HN, CP <i>et al.</i>
c.10 km north of Phnom Penh city, Kandal Province	11°38'59.21"N 104°53'7.97"E	2M, 2F	<i>O. sutorius</i> (1M)	Photograph	SPM, AJ, JCE
Bassac Marsh, Kandal Province	11°37'40.37"N 104°49'28.00"E	None	<i>O. atrogularis</i> (1M)	Photograph	SPM, AJ, CP <i>et al.</i>
Choeung Ek Marsh, Phnom Penh city	11°29'44.57"N 104°54'46.14"E	1M	<i>O. sutorius</i> (1M)	Photograph	SPM, AJ
Basset Marsh, Kandal Province	11°19'45.77"N 105°11'48.41"E	>8M, >6F	None	Photograph, sound recording	AJ, CP <i>et al.</i>
In scrub near rice fields, close to Phnom Tamao Zoo, Takeo Province	11°17'56"N 104°50'22"E	1M, 1F	None	Photograph	HN
Near Svay Reing Town, Svay Reing Province	11°6'29.52"N 105°48'31.31"E	1M, 1F	None	None	F. Goes

For observers, only authors are listed, unless site not visited by authors, for sake of brevity. M, Male; F, Female.

**Table S2. Specimens of closely related species measured and evaluated.**

Species	Subspecies	Number	Locality	Sex	Notes
<i>Orthotomus</i>	<i>humphreysi</i>	NHMUK	Bettotan, near	M	Holotype
<i>atrogularis</i>		1947.60.42	Sandakan, Borneo (Malaysia)		
<i>O. atrogularis</i>	<i>major</i>	NHMUK	Siantan Island, Anamba	M	Holotype.
		1947.60.41	Group, South China Sea (Indonesia)		Subsumed into <i>O. a. nitidus</i>
<i>O. atrogularis</i>	<i>nitidus</i>	NHMUK	Pahpoon, Salween	F	Syntype
		1886.10.1.1830	District, Tenasserim (Myanmar)		
<i>O. atrogularis</i>	<i>nitidus</i>	NHMUK	South Annam	M	
		1919.12.20.373	(Vietnam)		
<i>O. atrogularis</i>	<i>nitidus</i>	NHMUK	South Annam	M	
		1926.9.8.910	(Vietnam)		
<i>O. atrogularis</i>	<i>nitidus</i>	NHMUK	South Annam	M	
		1925.1.14.78	(Vietnam)		
<i>O. atrogularis</i>	<i>nitidus</i>	NHMUK	South Annam	F	
		1919.12.20.374	(Vietnam)		
<i>O. atrogularis</i>	<i>nitidus</i>	NHMUK	Cochinchina (Vietnam)	F	
		1955.1.3256			
<i>O. atrogularis</i>	<i>nitidus</i>	NHMUK	Cochinchina (Vietnam)	F	
		1927.6.5.1661			
<i>O. atrogularis</i>	<i>nitidus</i>	NHMUK	Cochinchina (Vietnam)	M	
		1936.4.12.2680			
<i>O. atrogularis</i>	<i>nitidus</i>	NHMUK	Cochinchina (Vietnam)	F	
		1936.4.12.2683			
<i>O. atrogularis</i>	<i>nitidus</i>	NHMUK	Cochinchina (Vietnam)	M	
		1936.4.12.2682			
<i>O. atrogularis</i>	<i>nitidus</i>	NHMUK	Cochinchina (Vietnam)	F	
		1936.4.12.2684			
<i>O. atrogularis</i>	<i>nitidus</i>	NHMUK	Cochinchina (Vietnam)	F	
		1955.1.3257			
<i>O. atrogularis</i>	<i>nitidus</i>	NHMUK	Phu Quoc (Vietnam)	M	
		1928.6.26.1209			
<i>O. atrogularis</i>	<i>nitidus</i>	NHMUK	Bokor (Cambodia)	U	
		1928.6.26.1210			
<i>O. atrogularis</i>	<i>nitidus</i>	NHMUK	Pak Hin Bon Lao (Lao	M	
		1955.1.3255	PDR)		

---

<i>O. atrogularis</i>	<i>nitidus</i>	NHMUK 1955.1.3247	East Siam (Thailand)	M	
<i>O. atrogularis</i>	<i>nitidus</i>	NHMUK 1955.1.3251	East Siam (Thailand)	M	
<i>O. atrogularis</i>	<i>nitidus</i>	NHMUK 1955.1.3248	East Siam (Thailand)	M	
<i>O. atrogularis</i>	<i>nitidus</i>	NHMUK 1955.1.3250	East Siam (Thailand)	M	
<i>O. atrogularis</i>	<i>nitidus</i>	NHMUK 1955.1.3249	East Siam (Thailand)	U	
<i>O. atrogularis</i>	<i>nitidus</i>	NHMUK 1955.1.3253	Koh Phra, East Siam (Thailand)	F	
<i>O. atrogularis</i>	<i>nitidus</i>	NHMUK 1955.1.3252	Koh Phra, East Siam (Thailand)	F	
<i>O. atrogularis</i>	<i>nitidus</i>	NHMUK 1955.1.3246	Central Siam (Thailand)	M	
<i>O. atrogularis</i>	<i>nitidus</i>	NHMUK 1955.1.3245	Central Siam (Thailand)	U	
<i>O. atrogularis</i>	<i>nitidus</i>	NHMUK 1915.12.18.192	Bangkok (Thailand)	M	
<i>O. atrogularis</i>	<i>nitidus</i>	NHMUK 1955.1.3243	Bangkok (Thailand)	M	
<i>O. atrogularis</i>	<i>nitidus</i>	NHMUK 1955.1.3244	Bangkok (Thailand)	M	
<i>O. atrogularis</i>	<i>nitidus</i>	NHMUK 1955.1.3242	Bangkok (Thailand)	M	
<i>O. atrogularis</i>	<i>nitidus</i>	NHMUK 1955.1.3254	North Siam (Thailand)	M	
<i>O. atrogularis</i>	<i>nitidus</i>	NHMUK 1916.12.27.982	Koh Bon, Siam (Thailand)	F	
<i>O. atrogularis</i>	<i>nitidus</i>	NHMUK 1936.4.12.2678	Siam (Thailand)	F	
<i>O. ruficeps</i>	<i>baweanus</i>	RMNH 27904	Bawean Island (Indonesia)	F	Paratype
<i>O. ruficeps</i>	<i>baweanus</i>	RMNH 27905	Bawean Island (Indonesia)	M	Paratype
<i>O. ruficeps</i>	<i>palliolatus</i>	RMNH 14065	Karimon Djawa (Indonesia)	M	Holotype
<i>O. ruficeps</i>	<i>cineraceus</i>	RMNH 137565	Palembang (Indonesia)	M	Holotype
<i>O. ruficeps</i>	<i>cineraceus</i>	NHMUK	Patani (Thailand)	F	

---

---

		1905.2.1.348		
<i>O. ruficeps</i>	<i>cineraceus</i>	NHMUK	Peninsular Siam	F
		1955.1.3218	(Thailand)	
<i>O. ruficeps</i>	<i>cineraceus</i>	NHMUK	Unknown	M
		86.10.1.1916		
<i>O. ruficeps</i>	<i>cineraceus</i>	NHMUK	Klang (Malaysia)	M
		86.10.1.1920		
<i>O. ruficeps</i>	<i>cineraceus</i>	NHMUK	Klang (Malaysia)	M
		86.10.1.1923		
<i>O. ruficeps</i>	<i>cineraceus</i>	NHMUK	Klang (Malaysia)	F
		86.10.1.1917		
<i>O. ruficeps</i>	<i>cineraceus</i>	NHMUK	Klang (Malaysia)	F
		86.10.1.1919		
<i>O. ruficeps</i>	<i>cineraceus</i>	NHMUK	Klang (Malaysia)	F
		86.10.1.1921		
<i>O. ruficeps</i>	<i>cineraceus</i>	NHMUK	Klang (Malaysia)	M
		86.10.1.1922		
<i>O. ruficeps</i>	<i>cineraceus</i>	NHMUK	Klang (Malaysia)	M
		86.10.1.1918		
<i>O. ruficeps</i>	<i>cineraceus</i>	NHMUK	Malacoa (Malaysia)	U
		76.2.12.22		
<i>O. ruficeps</i>	<i>cineraceus</i>	NHMUK	Malacoa (Malaysia)	M
		81.5.1.419		
<i>O. ruficeps</i>	<i>cineraceus</i>	NHMUK	Malacoa (Malaysia)	U
		80.1.1.4472		
<i>O. ruficeps</i>	<i>cineraceus</i>	NHMUK	Selangore (Malaysia)	M
		86.10.1.1926		
<i>O. ruficeps</i>	<i>cineraceus</i>	NHMUK	Selangore (Malaysia)	M
		86.10.1.1994		
<i>O. ruficeps</i>	<i>cineraceus</i>	NHMUK	Selangore (Malaysia)	M
		86.10.1.1925		
<i>O. ruficeps</i>	<i>cineraceus</i>	NHMUK	Selangore (Malaysia)	M
		86.10.1.1924		
<i>O. ruficeps</i>	<i>cineraceus</i>	NHMUK	Pahang (Malaysia)	M
		1936.4.12.2661		
<i>O. ruficeps</i>	<i>cineraceus</i>	NHMUK	Pahang (Malaysia)	M
		1936.4.12.2660		
<i>O. ruficeps</i>	<i>cineraceus</i>	NHMUK	Ding Ding (Malaysia)	F
		86.10.1.7271		
<i>O. ruficeps</i>	<i>cineraceus</i>	NHMUK	Johore (Malaysia)	U

---

---

		1021.12.27.25			
<i>O. ruficeps</i>	<i>cineraceus</i>	NHMUK	Penang (Malaysia)	M	
		86.10.9.1914			
<i>O. ruficeps</i>	<i>cineraceus</i>	NHMUK	Penang (Malaysia)	F	
		86.10.1.1915			
<i>O. ruficeps</i>	<i>cineraceus</i>	NHMUK	Kuala Lumpur	M	
		1936.4.12.2659	(Malaysia)		
<i>O. sepium</i>	<i>sundaicus</i>	RMNH 27906	Pulau Parnaitan	F	Syntype
			(Indonesia)		
<i>O. sepium</i>	<i>sundaicus</i>	RMNH 27907	Pulau Parnaitan	M	Syntype
			(Indonesia)		
<i>O. sepium</i>	<i>sepium</i>	NHMUK	Java (Indonesia)	M	Holotype
		1880.1.1.4473			
<i>O. sepium</i>	<i>sepium</i>	RMNH 97768	Pangerango (Indonesia)	M	
<i>O. sepium</i>	<i>sepium</i>	RMNH 97776	Pangerango (Indonesia)	M	
<i>O. sepium</i>	<i>sepium</i>	RMNH 97775	Pangerango (Indonesia)	M	
<i>O. sepium</i>	<i>sepium</i>	RMNH 97774	Pangerango (Indonesia)	M	
<i>O. sepium</i>	<i>sepium</i>	RMNH 97773	Pangerango (Indonesia)	M	
<i>O. sepium</i>	<i>sepium</i>	RMNH 97781	Pangerango (Indonesia)	M	
<i>O. sepium</i>	<i>sepium</i>	RMNH 97779	Pangerango (Indonesia)	M	
<i>O. sepium</i>	<i>sepium</i>	RMNH 97778	Pangerango (Indonesia)	M	
<i>O. sepium</i>	<i>sepium</i>	RMNH 97777	Pangerango (Indonesia)	M	
<i>O. sepium</i>	<i>sepium</i>	RMNH 97792	Pangerango (Indonesia)	F	
<i>O. sepium</i>	<i>sepium</i>	RMNH 97771	Pangerango (Indonesia)	M	
<i>O. sepium</i>	<i>sepium</i>	RMNH 97770	Pangerango (Indonesia)	M	
<i>O. sepium</i>	<i>sepium</i>	RMNH 97769	Pangerango (Indonesia)	M	
<i>O. sepium</i>	<i>sepium</i>	RMNH 97769	Pangerango (Indonesia)	M	
<i>O. sepium</i>	<i>sepium</i>	RMNH 97800	Pangerango (Indonesia)	F	
<i>O. sepium</i>	<i>sepium</i>	RMNH 97797	Pangerango (Indonesia)	F	
<i>O. sepium</i>	<i>sepium</i>	RMNH 97784	Saoeng Besoeki	M	
			(Indonesia)		
<i>O. sepium</i>	<i>sepium</i>	RMNH 97791	Tijalingin (Indonesia)	F	
<i>O. sepium</i>	<i>sepium</i>	RMNH 97780	Papoeran (Indonesia)	M	
<i>O. sepium</i>	<i>sepium</i>	RMNH 97772	Bandjas (Indonesia)	M	
<i>O. sepium</i>	<i>sepium</i>	RMNH 97803	Paseng Besoeki	F	
			(Indonesia)		
<i>O. sepium</i>	<i>sepium</i>	RMNH 97788	Paseng Besoeki	M	
			(Indonesia)		
<i>O. sepium</i>	<i>sepium</i>	RMNH 97786	Paseng Besoeki	M	
			(Indonesia)		

---

---

<i>O. sepium</i>	<i>sepium</i>	RMNH 97785	Paseng Bessoeki (Indonesia)	M
<i>O. sepium</i>	<i>sepium</i>	RMNH 97787	Paseng Bessoeki (Indonesia)	M
<i>O. sepium</i>	<i>sepium</i>	RMNH 97782	Bei Tjasingin (Indonesia)	M
<i>O. sepium</i>	<i>sepium</i>	RMNH 97790	Tijalingin (Indonesia)	F
<i>O. sepium</i>	<i>sepium</i>	RMNH 97789	Unknown	M
<i>O. sepium</i>	<i>sepium</i>	RMNH 97804	Halimoen (Indonesia)	F
<i>O. sepium</i>	<i>sepium</i>	RMNH 97801	Goenoeng Koepak (Indonesia)	F

---

Localities are given as stated on specimen labels, with present day countries added in parentheses. M, male; F, female; U, unknown.



**Table S3. Summary statistics for univariate measurements (in mm) of *Orthotomus chaktomuk* and closely related species.**

Species	Sex	Culmen	Tarsus	Wing	Tail	Culmen/wing
<i>O. chaktomuk</i>	M	13.0–14.5 (13.8; 0.76; 3)	19.0–19.5 (19.2; 0.29; 3)	45.0–47.0 (46; 1.00; 3)	36.0–42.0 (39.7; 3.21; 3)	0.28–0.32 (0.30; 0.02; 3)
<i>O. a. nitidus</i>	M	13.0–16.0 (14.7; 1.10; 15) ns	17.0–21.0 (18.5; 1.06; 15) ns	41.0–47.0 (43.9; 2.18; 17) ns	34.0–44.0 (38.6; 2.69; 17) ns	0.29–0.38 (0.34; 0.03; 15) *
<i>O. r. cineraceus</i>	M	14.0–17.0 (14.8; 0.97; 14) ns	18.0–20.0 (19.1; 0.73; 14) ns	40.0–50.0 (45.2; 2.62; 14) ns	37.0–52.0 (43.4; 5.14; 14) ns	0.29–0.38 (0.33; 0.03; 14) ns
<i>O. s. sepium</i>	M	12.0–17.0 (15.3; 1.22; 20) *	16.0–21.0 (18.4; 1.40; 20) ns	41.0–51.0 (45.1; 2.31; 20) ns	35.0–48.0 (42.1; 3.56; 18) ns	0.28–0.39 (0.34; 0.03; 20) *
<i>O. chaktomuk</i>	F	12.0–13.0 (12.5; 0.71; 2)	18.0–19.0 (18.5; 0.71; 2)	41.0–42.0 (41.5; 0.71; 2)	35.5–35.5 (35.5; 0; 3)	0.29–0.32 (0.30; 0.02; 2)
<i>O. a. nitidus</i>	F	12.0–17.0 (13.6; 1.58; 10) ns	14.0–19.0 (16.3; 1.49; 10) ns	40.0–46.0 (43.0; 2.00; 10) ns	32.0–42.0 (36.1; 3.25; 10) ns	0.27–0.37 (0.32; 0.03; 10) ns
<i>O. r. cineraceus</i>	F	13.0–14.0 (13.3; 0.52; 6) ns	17.0–19.0 (17.8; 0.75; 6) ns	43.0–47.0 (44.6; 1.51; 7) *	38.0–45.0 (40.3; 2.43; 7) *	0.28–0.33 (0.30; 0.02; 6) ns
<i>O. s. sepium</i>	F	12.5–16.0 (14.3; 1.16; 8) ns	14.0–19.0 (16.6; 1.60; 8) ns	39.0–44.0 (42.6; 1.60; 8) ns	33.0–44.0 (38.1; 3.80; 8) ns	0.28–0.38 (0.34; 0.04; 8) ns

Measurements are: culmen (length from bill-tip to skull), tarsus (length), wing (maximum length; flattened and stretched) and tail (length). Measurements were recorded to the nearest 0.5 mm. Values given are: minimum–maximum (mean; sd; sample size) \*P < 0.05, \*\*P < 0.01, \*\*\*P < 0.001, ns, not significant (t-test); comparisons with *Orthotomus chaktomuk* of relevant sex. Samples of *O. atrogularis nitidus* are from southern Vietnam (6 males, 6 females) and Thailand (mostly central; 9 males, 4 females), *O. ruficeps cineraceus* samples are from Peninsular Malaysia (14 males, 5 females) and peninsular Thailand (2 females), and *O. sepium sepium* samples are from Java, Indonesia (20 males, 8 females). M, male; F, female.

**Table S4. Recordings used in the vocal analysis.**

Species	Subspecies	Recordist	Locality	Recording ID	Source
<i>Orthotomus</i>		C. Poole	Basset Marsh, Kandal Province (Cambodia)	-	-
<i>O. chaktomuk</i>		C. Poole	Basset Marsh, Kandal Province (Cambodia)	-	-
<i>O. chaktomuk</i>		C. Poole	Basset Marsh, Kandal Province (Cambodia)	-	-
<i>O. chaktomuk</i>		J. Eaton	Prekydam, Kandal Province (Cambodia)	-	-
<i>O. chaktomuk</i>		R. Martin	Prek Ksach, Kandal Province (Cambodia)	-	-
<i>O. atrogularis</i>	<i>nitidus</i>	A. Meijer	Cat Tien National Park, Cochinchina (Vietnam)	xc35657	www.xeno- canto.org
<i>O. atrogularis</i>	<i>nitidus</i>	D. Farrow	Kaeng Krachan National Park (Thailand)	xc41392	www.xeno- canto.org
<i>O. atrogularis</i>	<i>nitidus</i>	D. Edwards	Ang Trapeang Thmor, Banteay Meanchey Province (Cambodia)	xc29562	www.xeno- canto.org
<i>O. atrogularis</i>	<i>nitidus</i>	F. Lambert	Phnom Krom Marsh, Siem Reap Province (Cambodia)	xc127894	www.xeno- canto.org
<i>O. atrogularis</i>	<i>nitidus</i>	F. Lambert	Sangkrous Preychheu Community Forest, Siem Reap Province	xc87809	www.xeno- canto.org

---

			(Cambodia)		
<i>O. ruficeps</i>	<i>borneoensis</i>	T. Boorsma	Gunung Lumut Protection Forest, East Kalimantan, Borneo	xc34503	www.xeno- canto.org
			(Indonesia)		
<i>O. ruficeps</i>	<i>borneoensis</i>	S. Pieterse	Rainforest Discovery Centre, Sepilok, Sabah, Borneo (Malaysia)	xc33043	www.xeno- canto.org
<i>O. ruficeps</i>	<i>cineraceus</i>	F. Lambert	Lukit Mangroves, Negri Sembilan (Malaysia)	xc78421	www.xeno- canto.org
<i>O. ruficeps</i>	<i>borneoensis</i>	D. Edwards	SAFE project, Sabah, Borneo (Malaysia)	xc70576	www.xeno- canto.org
<i>O. ruficeps</i>	<i>cineraceus</i>	D. Farrow	Yarlung (Thailand)	xc41393	www.xeno- canto.org
<i>O. sepium</i>	<i>sepium</i>	G. Wagner	Ijen, Java (Indonesia)	xc42378	www.xeno- canto.org
<i>O. sepium</i>	<i>sepium</i>	M. Feuersenger	Gerokgak, Buleleng, Bali (Indonesia)	xc38342	www.xeno- canto.org
<i>O. sepium</i>	<i>sundaicus</i>	B. van Balén	Panaitan Island, Java (Indonesia)	xc71644	www.xeno- canto.org
<i>O. sepium</i>	<i>sepium</i>	M. Feuersenger	Ubud, Gianyar Regency, Bali (Indonesia)	xc38506	www.xeno- canto.org
<i>O. sepium</i>	<i>sepium</i>	P. Rasmussen	Bali Barat National Park, Bali (Indonesia)	AV13109	http://avocet. zoology.msu. edu/

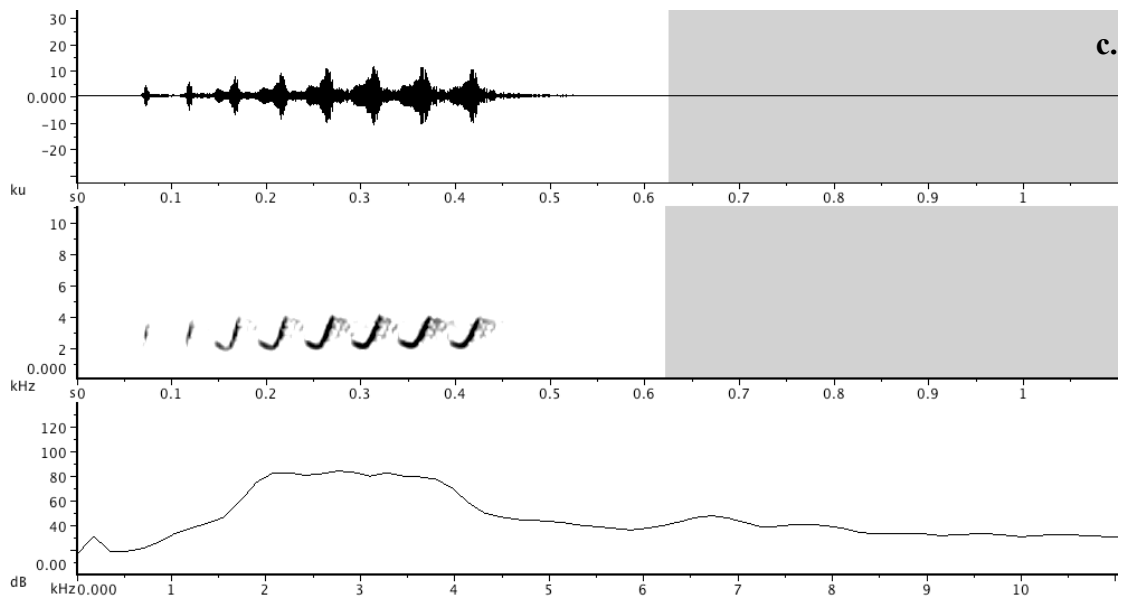
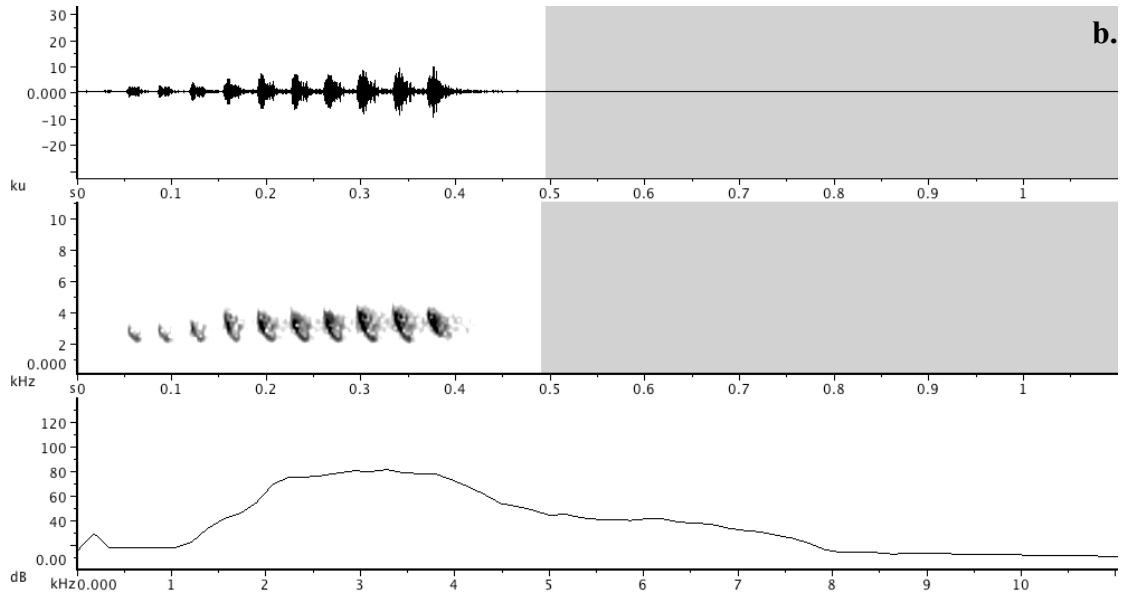
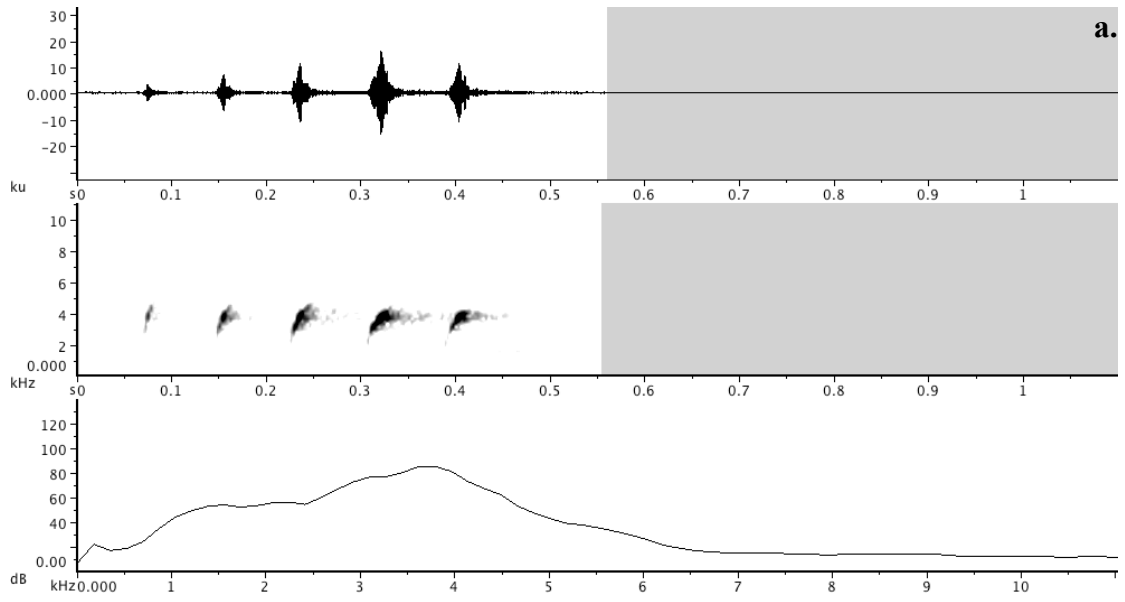
---

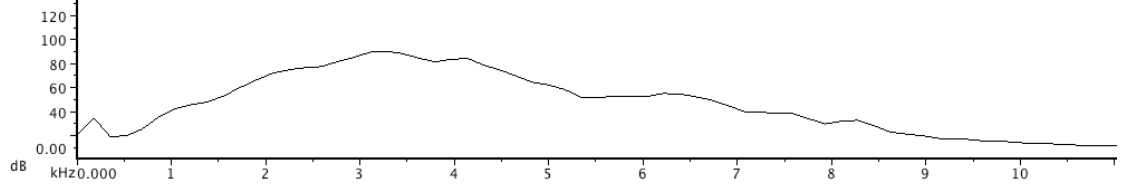
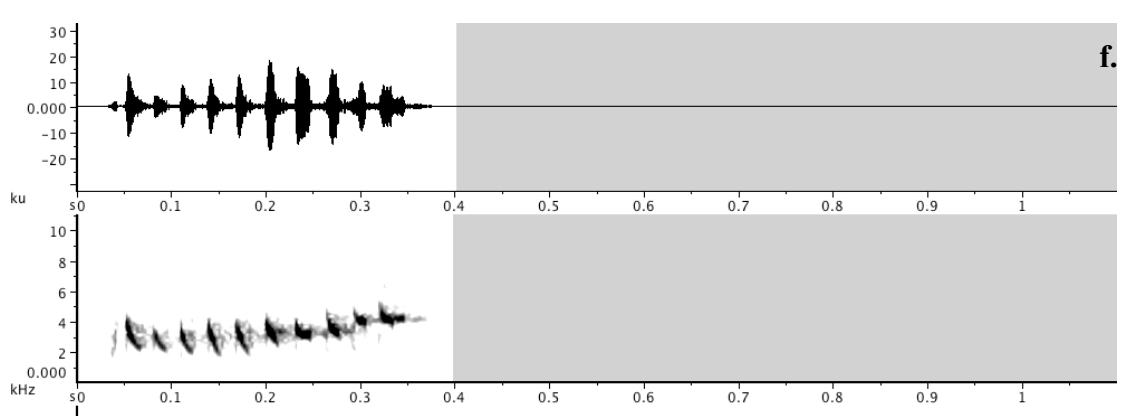
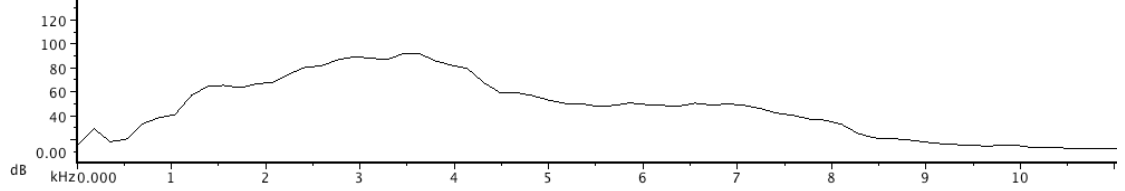
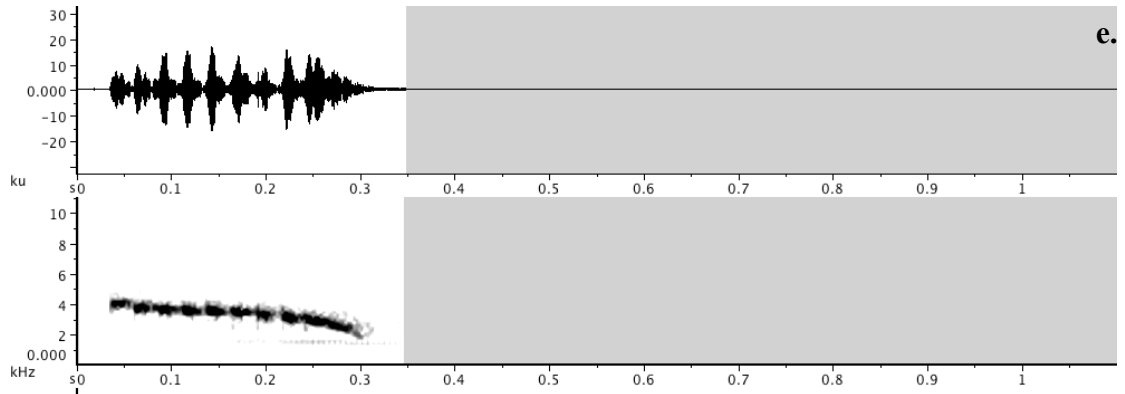
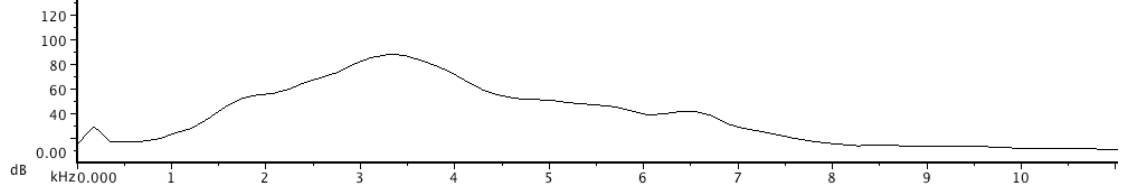
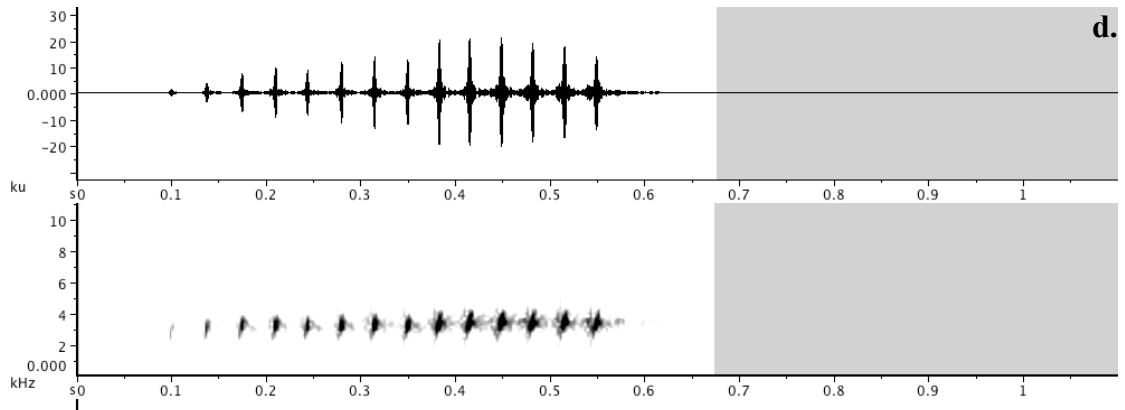
**Table S5. Specimens compared in the genetic analysis.**

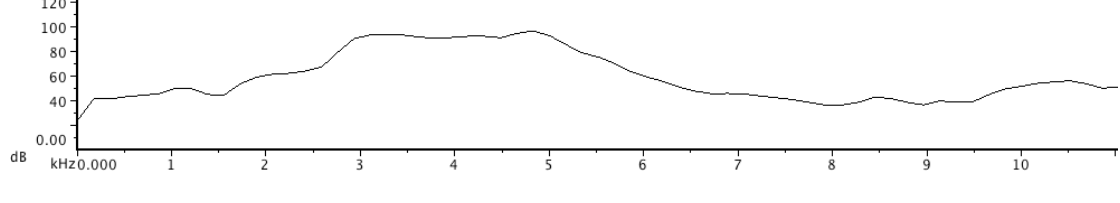
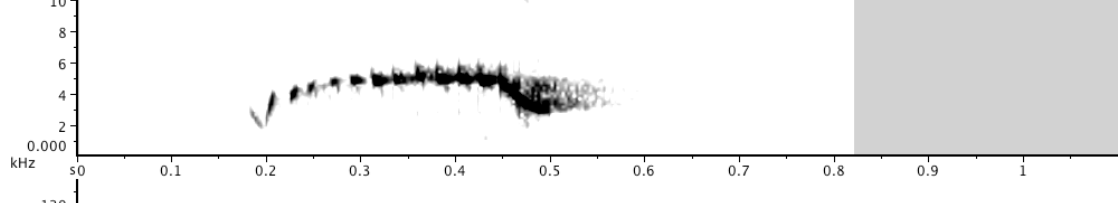
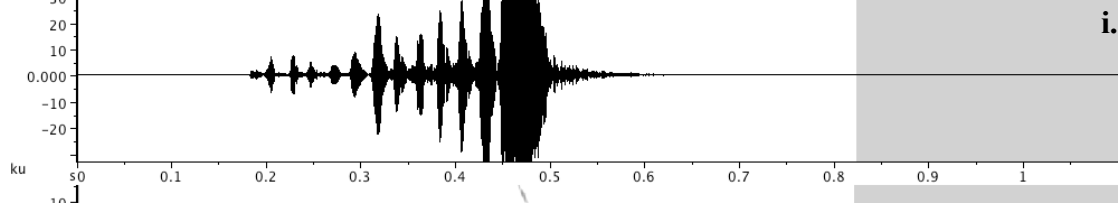
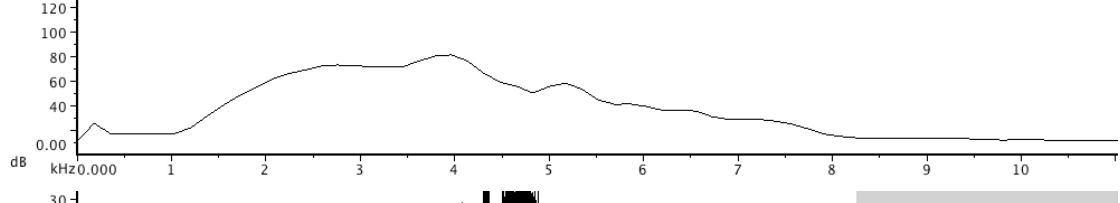
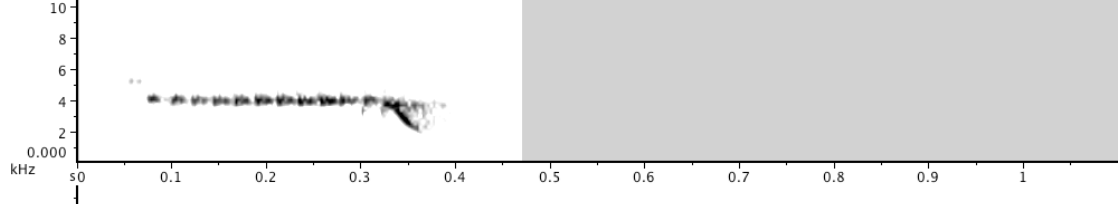
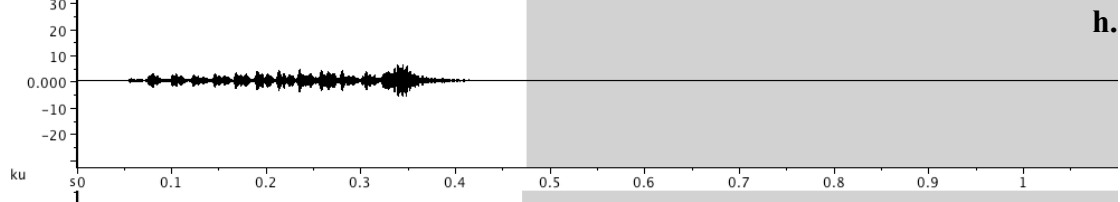
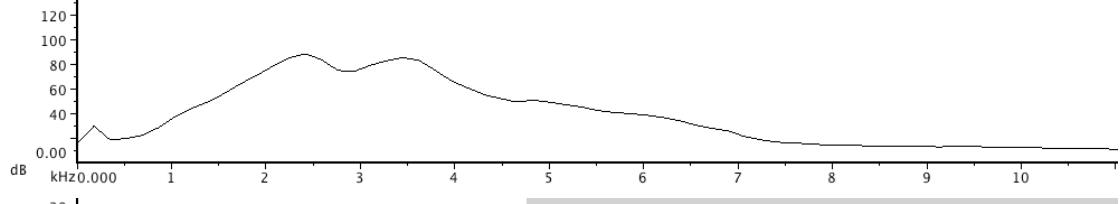
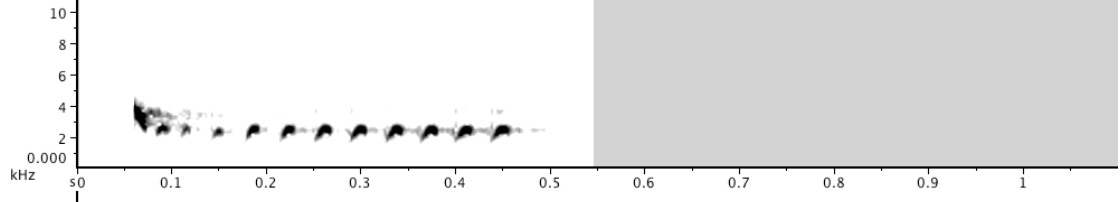
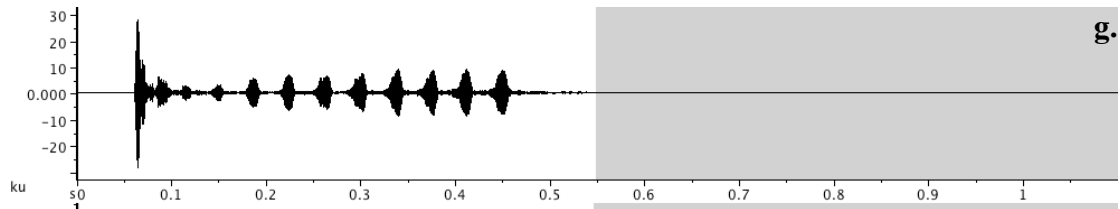
<b>Species</b>	<b>Subspecies</b>	<b>Number</b>	<b>Locality</b>
<i>Orthotomus</i>		NHMUK	Bateay District, Kompong Cham Province
<i>chaktomuk</i>		2012.9.1	(Cambodia)
<i>O. chaktomuk</i>		NHMUK	Bateay District, Kompong Cham Province
		2012.9.2	(Cambodia)
<i>O. chaktomuk</i>		NHMUK	Bateay District, Kompong Cham Province
		2012.9.3	(Cambodia)
<i>O. chaktomuk</i>		NHMUK	Bateay District, Kompong Cham Province
		2012.9.4	(Cambodia)
<i>O. chaktomuk</i>		NHMUK	Bateay District, Kompong Cham Province
		2012.9.5	(Cambodia)
<i>O. atrogularis</i>	<i>atrogularis</i>	LSUMNS 57037	Tatau District, Sarawak (Malaysia)
<i>O. ruficeps</i>	<i>cineraceus</i>	J 1156	Singapore
<i>O. ruficeps</i>	<i>cineraceus</i>	DOT 17284	Singapore
<i>O. ruficeps</i>	<i>borneoensis</i>	LSUMNS 47143	Kilias Forest Reserve, Sabah (Malaysia)
<i>O. sepium</i>	<i>sepium</i>	ANSP 56705	Java (Indonesia)
<i>O. sepium</i>	<i>sepium</i>	AMNH 269052	Java (Indonesia)
<i>O. sepium</i>	<i>sepium</i>	AMNH 703336	Java (Indonesia)
<i>O. sepium</i>	<i>sepium</i>	USNM 220247	Java (Indonesia)
<i>O. sepium</i>	<i>sepium</i>	USNM 219589	Java (Indonesia)

**Table S6. GenBank accession numbers for nucleotide sequences of *Orthotomus chaktomuk* used in the genetic analysis.**

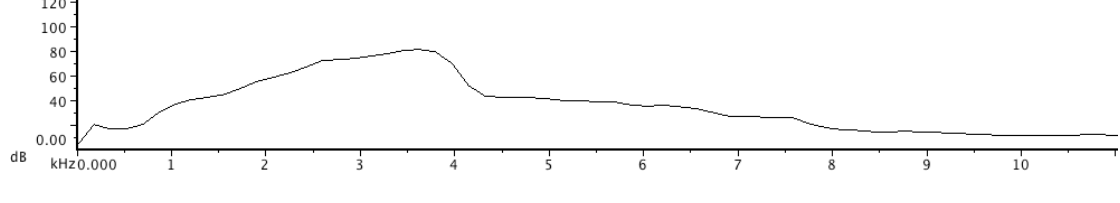
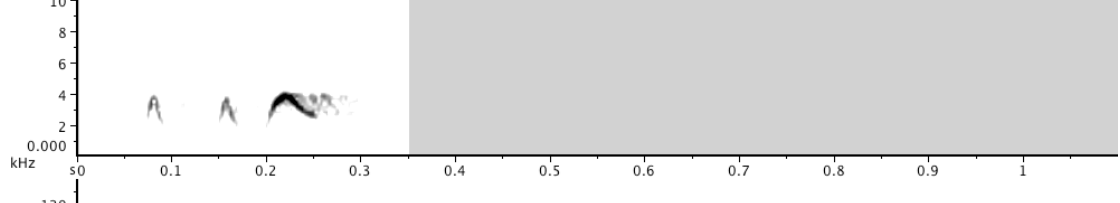
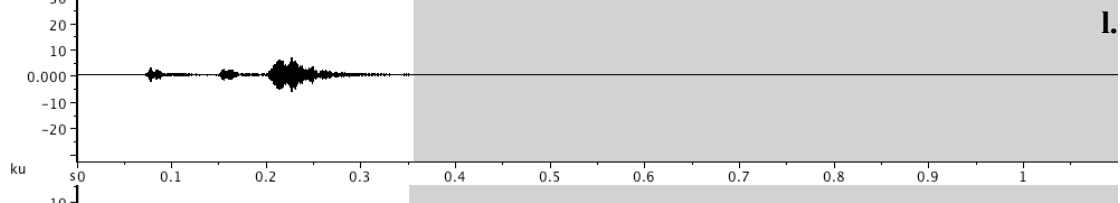
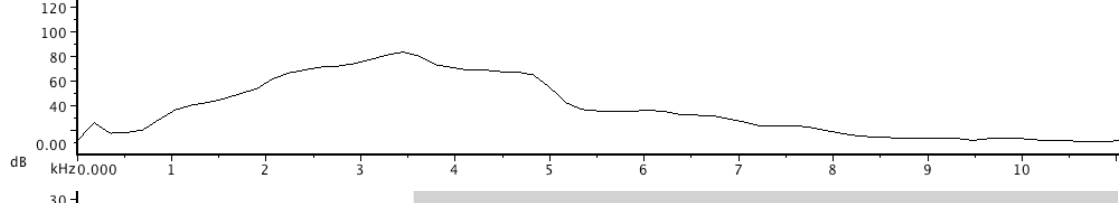
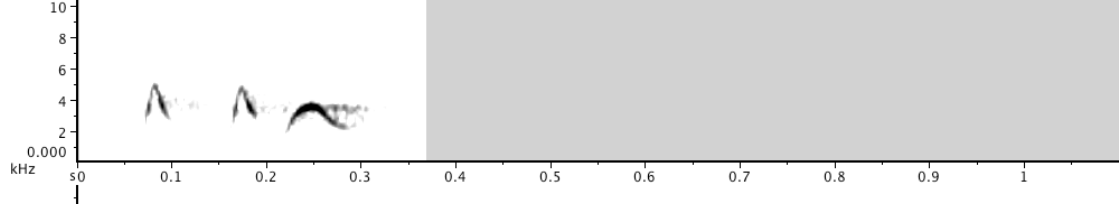
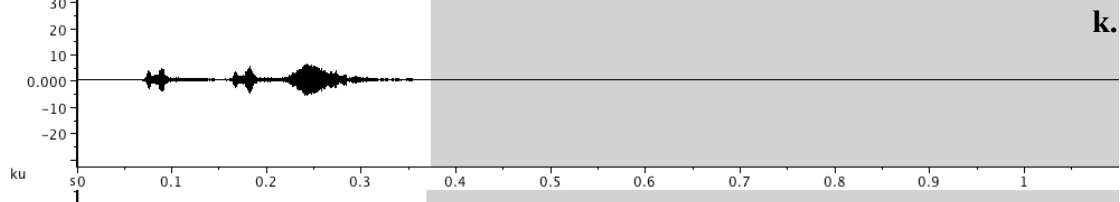
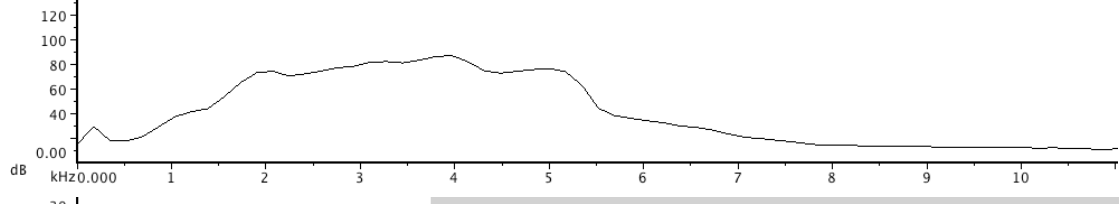
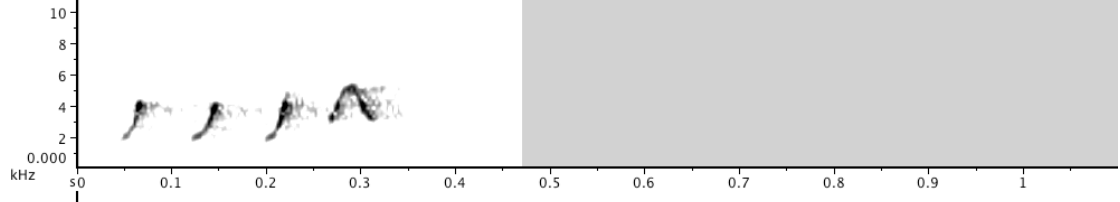
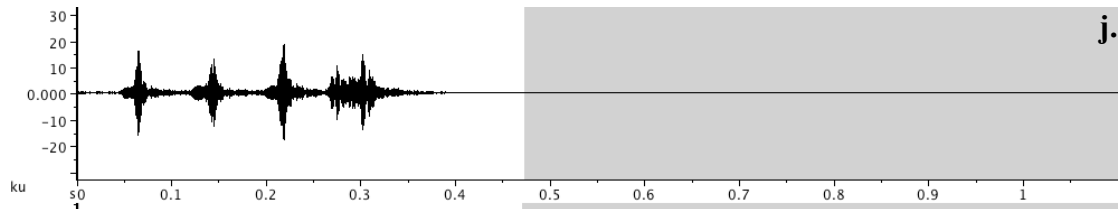
Species	Subspecies	Number	Locality
ND2.sqn	Ortcha201291	KF015230	
ND2.sqn	Ortcha201292	KF015231	
ND2.sqn	Ortcha201293	KF015232	
ND2.sqn	Ortcha201294	KF015233	
ND2.sqn	Ortcha201295	KF015234	
ND2.sqn	Ortsut23548	KF015235	
TGF.sqn	Ortcha201291	KF015236	
TGF.sqn	Ortcha201292	KF015237	
TGF.sqn	Ortcha201293	KF015238	
TGF.sqn	Ortcha201294	KF015239	
TGF.sqn	Ortcha201295	KF015240	
TGF.sqn	Ortsut23548	KF015241	
Musk.sqn	Ortsut23548	KF015242	
Musk.sqn	Ortcha201291	KF015243	
Musk.sqn	Ortcha201292	KF015244	
Musk.sqn	Ortcha201293	KF015245	
Musk.sqn	Ortcha201294	KF015246	
Musk.sqn	Ortcha201295	KF015247	

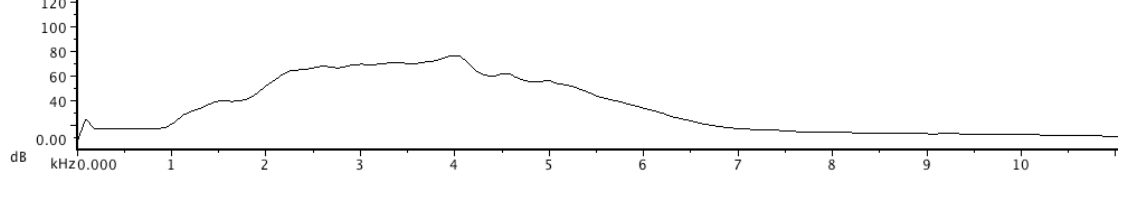
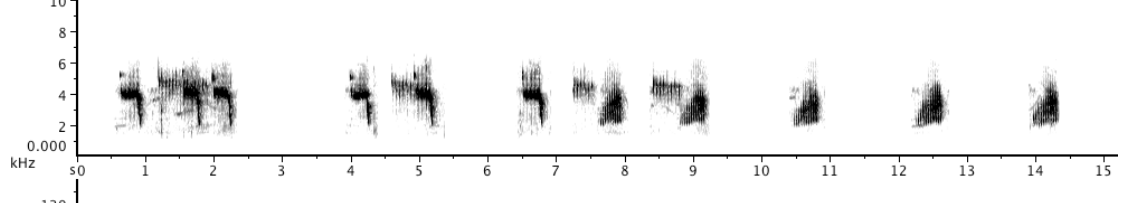
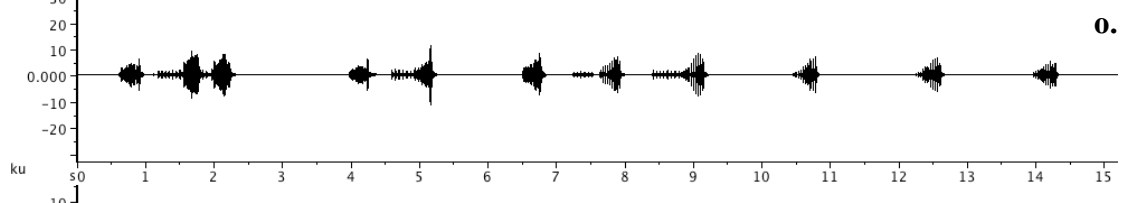
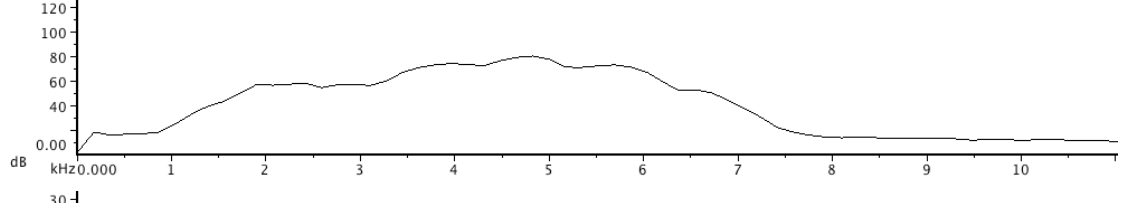
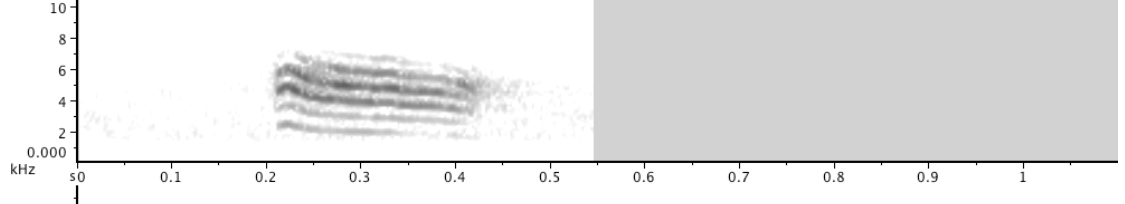
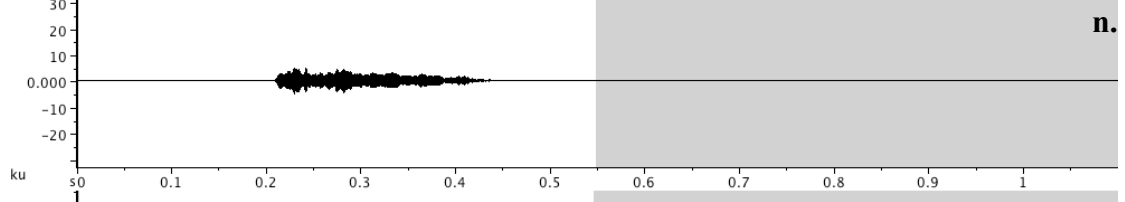
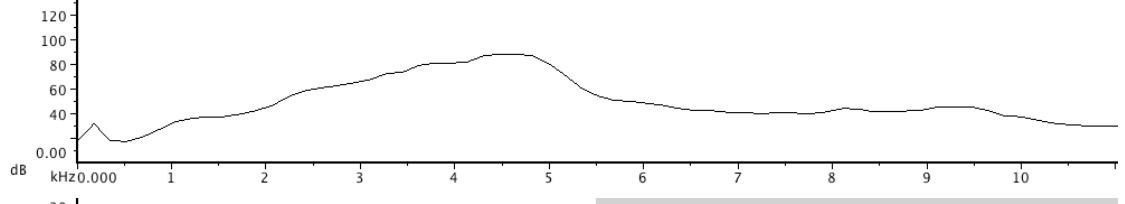
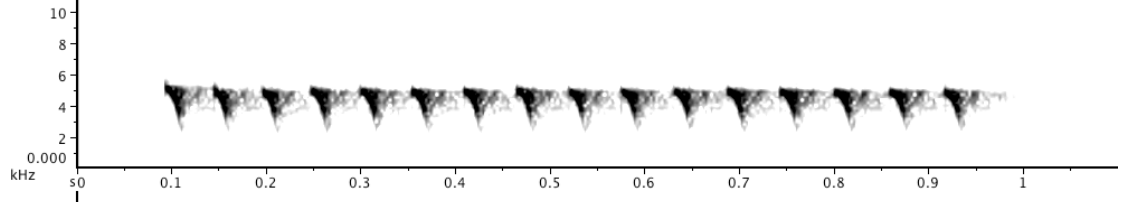
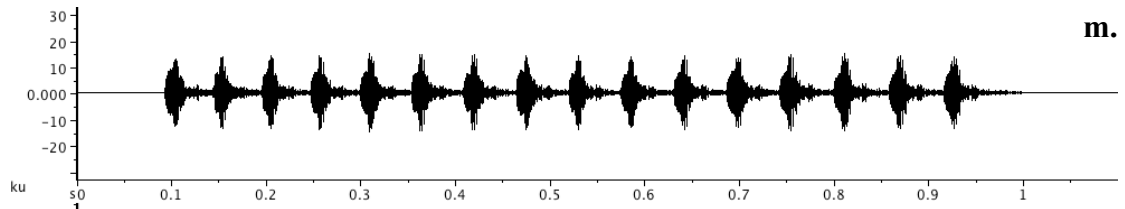


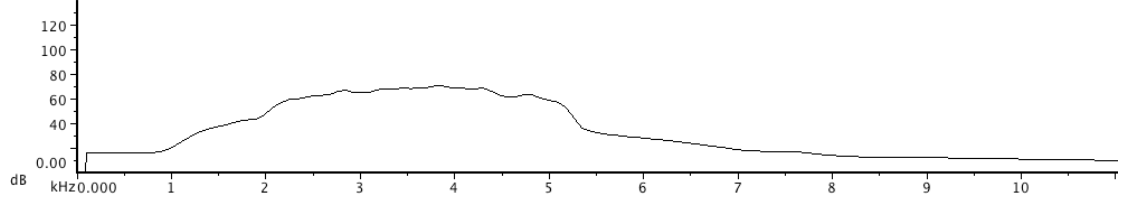
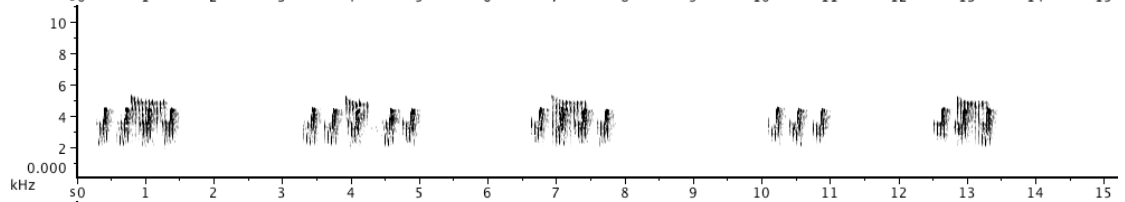
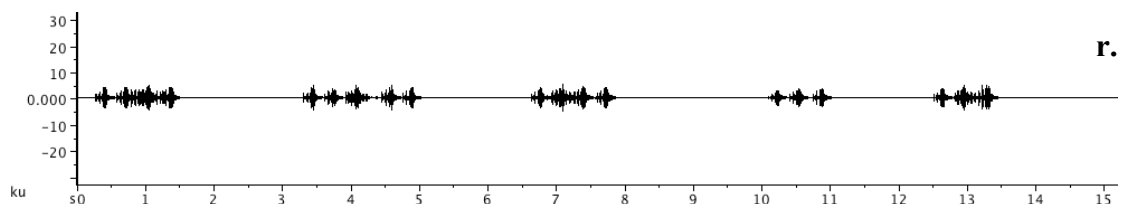
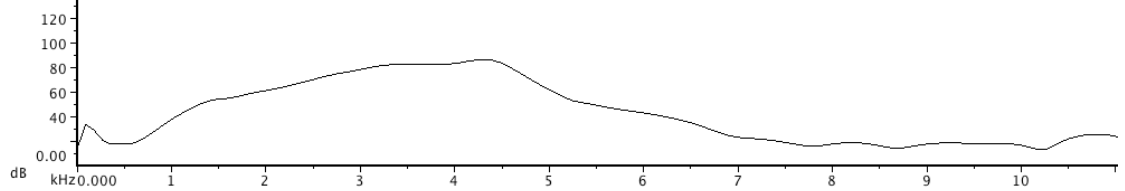
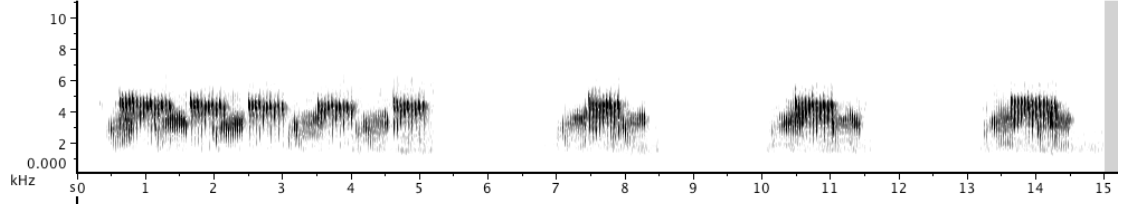
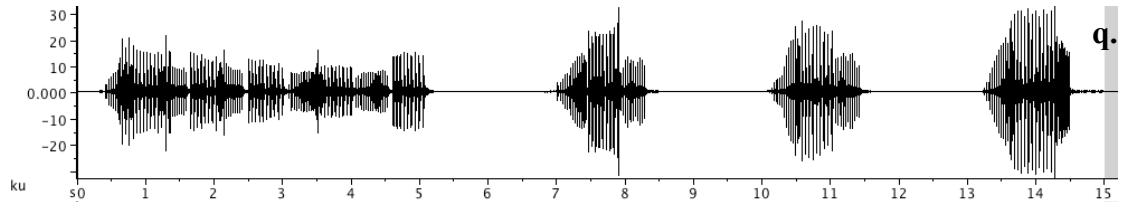
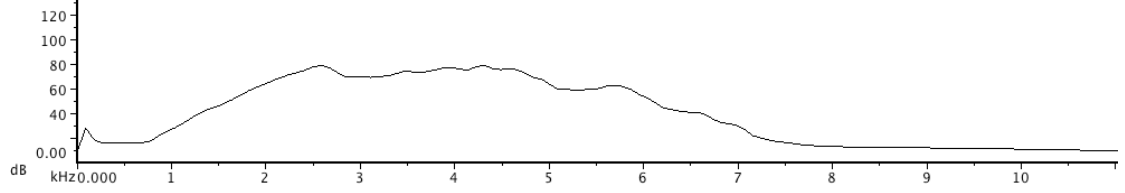
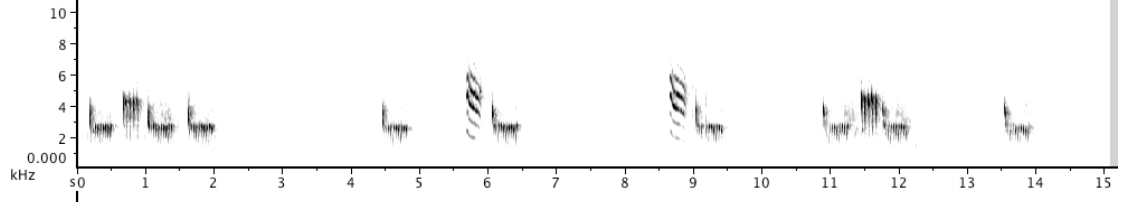
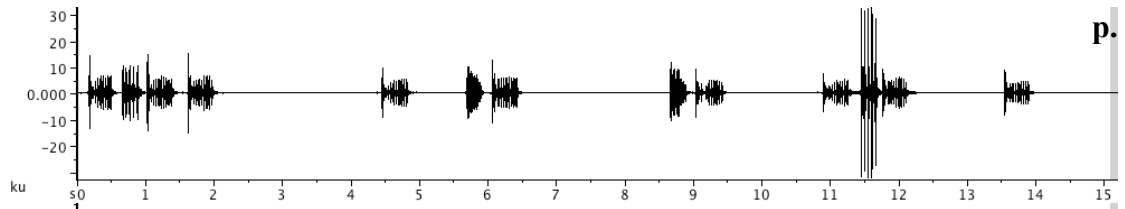


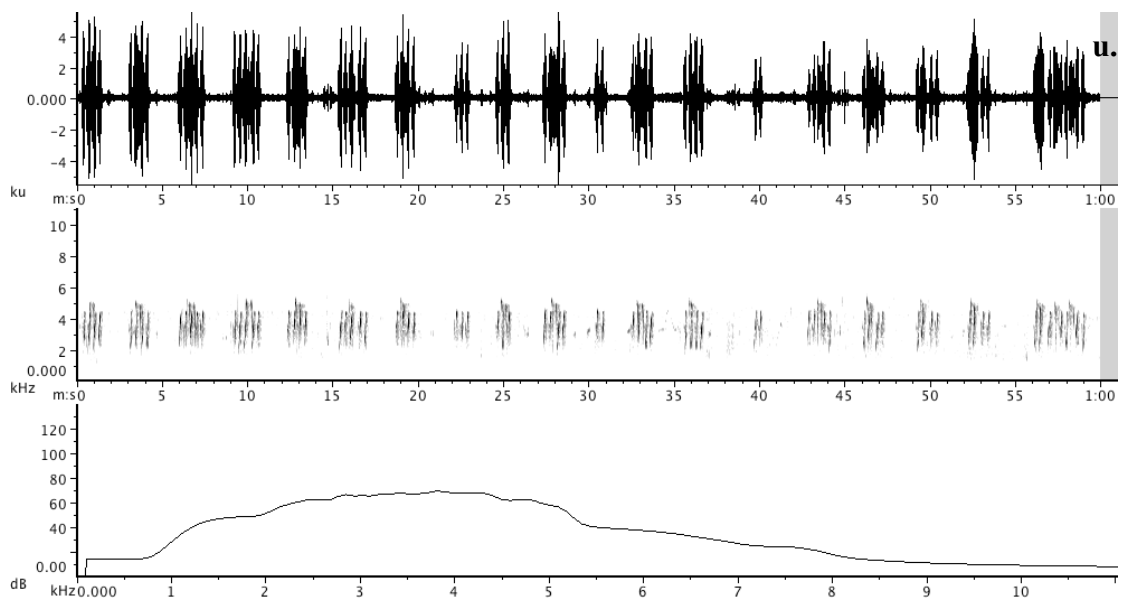
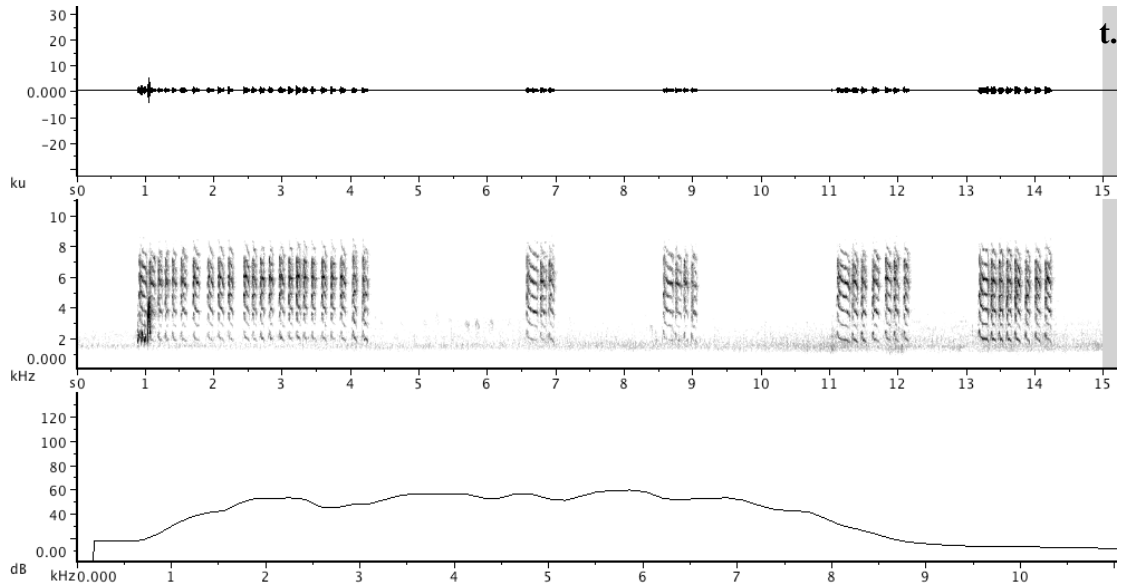
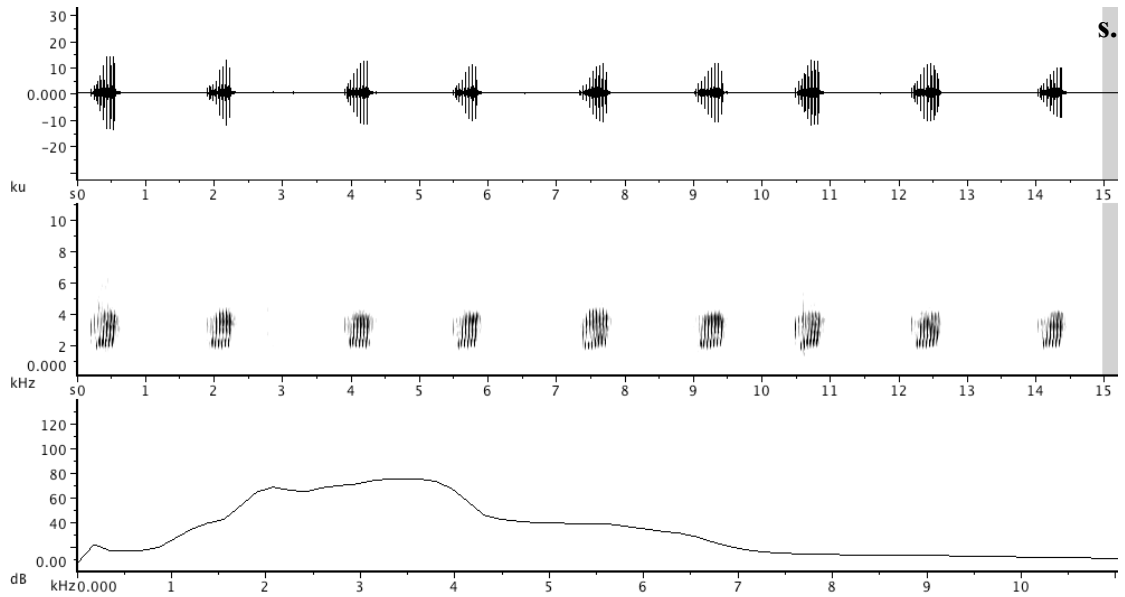












**Figure S1.** Vocalisations of *Orthotomus chaktomuk*. All known strophe types and representative song fragments. For each vocalisation, the first row is the waveform, the second is the sonogram, and the third is the spectrum: (a–l): male strophes, all 30 June 2012 (C. Poole) except (a): 2 September 2012 (R. Martin) and (e–f): 29 October 2012 (J. Eaton); (m): female trill, 30 June 2012 (C. Poole); (n): female squeak, 30 June 2012 (C. Poole); (o–s): 15 second snatches of typical male-female vocalisations, all 30 June 2012 (C. Poole); (t): multiple female squeaks and one male strophe, 29 October 2012 (J. Eaton); (u): 60 second fragment of typical male-female vocalisations, 30 June 2012 (C. Poole). Sonagrams (spectrograms) prepared in Raven Pro 1.4 along with the corresponding waveform (oscillogram, in Raven units, which are unique to Raven software), which shows power versus time, and hence allows visualisation of rhythm better than the sonogram alone. The corresponding spectrum plots power versus frequency, allowing visualisation of power peaks.

**Media File S1.** Video of adult male *Orthotomus chaktomuk* (relatively pale-coloured male; fairly worn plumage); 11°50'12.09"N 104°49'20.55"E, 17 March 2013 (M. Kennewell).

**Media File S2.** Video of adult male *Orthotomus chaktomuk* (relatively dark-coloured male with extensive throat streaking); 11°50'12.09"N 104°49'20.55"E, 17 March 2013 (M. Kennewell).

**Media File S3.** Video of adult female *Orthotomus chaktomuk*; 11°50'12.09"N 104°49'20.55"E, 17 March 2013 (M. Kennewell).

**Media File S4.** Vocalisations of *Orthotomus chaktomuk*; male–female duet; 11°19'45.77"N 105°11'48.41"E, 30 June 2012 (C. Poole).

**Media File S5.** Vocalisations of *Orthotomus chaktomuk*; male–female duet (different individuals to those in Supplementary Media File S4); 11°19'45.77"N 105°11'48.41"E, 30 June 2012 (C. Poole).

**Media File S6.** Vocalisations of *Orthotomus chaktomuk*; two males and one female, 'normal' song strophes followed by nasal squeaking; 11°50'12.09"N 104°49'20.55"E, 29 October 2012 (J. Eaton).